



Water Supply No Problem

"How's the water holding up?" is a question asked repeatedly by students lately. In answer, University officials say "Just fine."

This question arises from the fact that since early September, Seawanee has had but one feeble drizzle. Remembering the ice storm of 1961 and the severe water shortage which followed, many upperclassmen have been speculating as to the possibility of a few days vacation because of the drought. Dean Webb squelched this idea when he stated that, "we could go until Christmas without another drop of water falling."

The water shortage, although a serious problem all over Tennessee, has been provided for on the Mountain. While St. Mary's was forced to move to Montealegre after its wells dried up, Seawanee is well protected by a recently expanded reservoir. Mr. Hamilton, head of the water department, explained that the five feet added to the dam at Lake O'Donnell last year better than the five feet of water in a million gallon water reserve. He also pointed out that Seawanee can draw about 50,000 gallons of water per day from ATO, Tremlett and Bubbling Springs. The 1960-61 season had a 100 percent drain on the reservoir. This means that although the lake appears to be down considerably, the school has more water than it needs.

(Continued on page four)



Approaching completion, McCrady Hall, complete with turret, will house residents of Barton, Seiden, and Woodland.

McCrady Nearly Ready; Last Dorm on Old Campus

By WILSON W. WYATT, JR.
The last dormitory to be erected on the campus of the present undergraduate college of the University is McCrady Hall, now under construction in the area between the forestry building and Gailor Hall.

The completion of the new dormitory will enable the residents of Barton, Seiden, and Woodland Falls to enjoy the comforts of modern living before the beginning of the second semester of this school year. However, much to the dismay of many students, the vacated dormitories will probably remain standing, traditionally, at least through 1964. The increase in the number of students at the University has brought about a serious housing problem for students' dates on party weekends and for students' parents on various other occasions. Barton, Seiden, and Woodland are being considered for housing such guests of the University when the need arises.

When and if Woodland is torn down, the married students who now live there will take residence in the new, duplex homes being built around campus. Many married students have already occupied these homes.

McCrady Hall was designed by the Edwin A. Kerble and Associates architectural firm in Nashville. Now nearing completion, the dormitory is set in the traditional architecture of English style with the other University buildings, the exterior being Seawanee sandstone. It was largely due to the plans of McCrady Hall, Benedict Hall, and the duPont Library that Seawanee was chosen to receive the Ford Foundation grant which is nearly doubling the proposed income for Seawanee's ten-year expansion plan.

The suites in the new dormitory will comfortably accommodate 98 students and one matron. Arranged in a fairly consistent pattern, each furnished suite contains two double bedrooms, two studios, and one bath. The bedrooms are approximately nine by twelve feet and the studios are eight by twelve feet.

All Saints' Day

On All Saints' Day, Friday, November 1, there will be Corporate Communion for the University community at 12:10 in All Saints' Chapel. Lunch will not be served until 1 p.m. on Friday.

This is a nation-wide Corporate Communion for all Anglicans in schools and colleges, and is a major Holy Day as well. All students will receive a chapel credit Friday whether they come or not, so there is no compulsion to attend.

Holy Communion will also be celebrated Friday at 7 a.m. in St. Luke's Chapel and at 9 a.m. in St. Augustine's Chapel.

There is plenty of space for mobility, and there is a greater assurance of privacy than in most of the dormitories.

When McCrady Hall is occupied, before the second semester, it will be the last dormitory to be built for this campus of the University. The next building for boarding students to be designed and erected will constitute Seawanee's major transition from one undergraduate college to two colleges, from one campus to two separate campuses. It is expected that the atmosphere and traditions of the University will not change but only continue in two colleges instead of one.

Late News Briefs

There will be a party for Seawanee students at the Chisena Hotel in Memphis after the Seawanee-Southwestern game Saturday, about five p.m. The word is B.Y.O.L.

In recent elections Jody Smith was chosen freshman member of

New Windows Finish All Saints' Chancel

Two new windows have been installed recently in the chancel of All Saints' Chapel, completing the Life of Christ series.

The Passion Window is the center one on the north, or congregation's left, side. It contains scenes of Christ's Death and Passion, including the nine Biblical Stations of the Cross.

The Miracles Window is the one nearest the Nave on the north side. It has scenes of Christ's miracles, such as feeding the multitude, raising Lazarus from the dead, and others, climaxed by the Transfiguration at the top of the window. In contrast to those the window also depicts scenes of Man's rejection of the miracles of Divine Love: Jesus deserted after the Feeding, rejected by a Samaritan village, and others. The Passion Window, of course, emphasizes this whole theme, and the triumph of Divine Love over Man's rejection is seen in the Resurrection and Ascension Window, the one nearest the Altar on the north side.

These two windows complete the Chancel windows, a series of six on the Life of Christ. The three windows on the south side present the Nativity, the Sermon on the Mount, and the Parables, in that order from the altar towards the Nave.

The next window to be made will be the one nearest the altar on the south (right) side of the Nave. It will depict scenes from the Book of Genesis, including the Creation. The other windows have not been definitely planned yet, except that those on the south side of the Nave will show scenes from

the Old Testament and those on the north side will depict Church history.

The windows over the Altar and the Rose Window are very dark, but the Chancel windows have progressively more light colors in them as one goes from the Altar towards the Nave. It is hoped that this will prevent the Chapel's seeming too dark when all the windows are installed. The windows in the Nave will be generally light but some darker windows may be intermixed for variety. Chaplain Collins hopes a greater variety of design, possibly including some contemporary designs, can be achieved in the "New Windows." The general design for the All Saints' windows was done by Mr. Arthur Erridge of Exeter, Devonshire, and the windows are made by Wippell of Exeter.

The two new windows, the Miracles and the Passion, are given by Mr. and Mrs. E. H. Little of New York in memory of Mrs. Little's three brothers, all of Memphis: Marye Beatie Trezevant, (1872-1930), Stanley Hamilton Trezevant (1884-1959), and Roy Hayne Trezevant (1882-1959). The first two named were Seawanee men. Mrs. Little is the former Suzanne Trezevant of Memphis, and Mr. Little is past president of the Colgate-Palmolive Peet Company.

Classics Meet

A meeting of persons interested in the Classics was held Friday night in Lower Gentry.

Dr. J. H. W. Rhye, professor of New Testament in St. Luke's and member of the classics department of the College, showed slides of his travels this past year in Greece and Asia Minor. There were about twenty people present. The meeting was organized by Radon Alexander.

This meeting may be the beginning of a club for the appreciation of the Classics. Whether it will be a language club remains to be decided, but certainly most of those taking Latin and Greek will be among its members. No real decision as to the formation of a club was made at the meeting. The names of those interested were taken, and they will be informed when a regular organizational meeting is held. Those interested who were unable to come to the meeting are urged to see Dr. Turlington, Mr. Carleton, or Radon Alexander.

Football Rush Nets Twelve

ATO pledged six freshmen football players, Fiji three, Betas two, and Sigma Nu one after two weeks of close-fought and informal rush.

The ATOs contacted Tommy Moon of Charlotte, N. C., Tim Strohl of Chicago, Jerry Bradley of Southern Pines, N. C., Henry Johnson of Kingsport, Tenn. and Richard Dolber of Jackson, Tenn.

The three Fiji pledges are John Hayes of Rock Hill, S. C., Penn Joseph of Washington, D.C., and Bill Wright of Montgomery, Ala. Chip Langley of Chattanooga and Tommy Balesley of Reidsville, N. C. went Beta Theta Pi, and Billy Hay, the manager of the team from Farmville, Va., pledged Sigma Nu.

Wolfe Play To Be Read; Irma Set

On Friday, November 1, 1963, in Quarry Hall the Seawanee Community Theatre will present the second in a series of play readings with Ketti Frings' play, *Look Homeward, Angel*; at 8:15 the reading is a comedy-drama in three acts and is based on the novel of the same name by Thomas Wolfe. It is in part autobiographical and takes place in the mythical town of Altamont, N. C., which is supposed to be Asheville, N. C.

Directing this play reading is the Rev. David Collins. The cast includes: Eric Peterson, Rev. Mr. Collins, Kate Kile, Mrs. Eleanora, Linda Varnell, Ken Martin, Gage Smith, Scott Danbar, Dr. Briel Keppler, Mrs. Corbin, Mrs. Edith Whitesell, Fran Carleton, and Preston Hall.

The Seawanee Community Theatre is also having a benefit showing of the movie, *Irma la Douce* at the Seawanee Union Theater on the 6, 7, and 8 of November. This showing has been made possible through the generosity of Mr. Freeman and the money raised will be used to continue the series of play readings and a major production next semester.

Bloodmobile Visits Nov. 20, Students Asked to Volunteer

The Red Cross Bloodmobile will make its annual visit to Seawanee on Wednesday, November 20th.

The students of the University, at 10 years past, are asked to give one pint of blood per volunteer. If Seawanee men contribute the requisite 170 pints, Emerald-Hodge Hospital will receive blanket coverage in the Blood Bank for its patients.

As in past years, the donations will be given on a competitive basis. The fraternity which gives the most blood in ratio to the total number of members will get the usual commendation in chapel, the helmet with the symbolic feather, and a picture in the yearbook. The winning group will receive blanket coverage in the Blood Bank for their patients.

The procedure for those who wish to donate blood is relatively simple. The proctor in each dorm have distributed parental consent cards to all students. These should be filled out and returned to the proctors as soon as possible, as it is necessary to have parental consent for those under twenty-one who wish to donate blood.

For the individual student interested chiefly in himself there is one other good reason for giving blood. Any making a donation to the Blood Bank will receive a card entitling him to receive blood at no cost at any time he should need it during the coming year.

Androcles-Lion Cast Announced

Rehearsals are now underway for the Purple Masque's fall production, *Androcles and the Lion*. The play, a comedy by George Bernard Shaw, will be presented on November 21, 22, and 23.

The cast, as announced by director Robert Weston, includes: Mike Napier as Androcles; Linda Varnell, Megestrie; Bill Stirling, the Captain; Sarah Kirt-Smith, Leona; Larry Sievert, Spintho; John Carey, Metellus; John Hisey, the Centurion; Doug Stirling, Lentulus; Dave Millin, Terrovius; Mike Napier, the Emperor; Scott Smith, the Call Boy; and Bill Elliott, the Ox-driver.



Among party weekend visitors to the new Lambda Chi house (see story on page four) were Al Schmutzer and his beautiful wife, Mrs. Nancy Hard, a sophomore at Stephens College, Columbia, Mo. She's welcome to come back any time.

More Words on an Ole Theme

We've little black sheep who lost our way,
 Ben, bob, ban,
 Certain sinners on a spree,
 Doomed from here to eternity,
 Lord, have mercy on such as we,
 Ben, bob, ban,
 Yale University "Whiffenpoof Song"

The Editor asks the pardon of those who feel we are over-burdening a topic, with another editorial page devoted to bad conduct at Sewanee and its punishment. We feel that two

"It Was Done in Better Taste"

We feel that the traditional conception of discipline at Sewanee is, or was, one of ordered liberty, administered by students so far as possible, and seeking only to maintain a pleasant, ordered environment allowing as much freedom as reasonably possible. It sought not to punish with malice and vengeance, nor arbitrarily. It did not set "examples" or punish small offenses with dire measures, nor take youthful jests too seriously. The *Puritz* has, and still does, make loud lamentations for those we feel have been dealt with in these (see last editorial).

But this conception of discipline is suitable mainly for a small community of well-bred men, such as Sewanee was, on the whole, during its first century. This is not to say Sewanee was "deader" than any alumnus can tell of epic hell-raising here that surpassed any we have now. But recent conversation with several alumni reveals a difference: "It was done in better taste." What does this mean?

It means that Sewanee men have rolled historical cannon halls down the Capitol hill into the traffic in Nashville, and put flour in the organ pipes to create a "blizzard" in Chapel, and sent an entire army catvan. Fiel-Paper-like toward the cliff.

perhaps related tendencies—that of over-severe punishment for small offenses and increasing vulgarity among students—are leading Sewanee to some sort of crash. We are really at a loss to understand what is happening, but have a vague feeling that these tendencies are not right and that unless they change soon Sewanee's whole conception of student conduct and its regulation must be altered. It is because of this feeling that we print these two editorials, which we hope will not seem contradictory, and two letters to the Editor on similar subjects. We invite other students to contribute their opinions on this subject.

But these same men would have been appalled by the "gotcha," the Balcony Scene, the Blasphemy, and similar occurrences. The deans, I believe, are greatly upset by these events and feel, wrongly, that they are somehow responsible for them. This causes the deans to take desperate, ill-conceived steps in hope of ameliorating the situation, such as suggesting the abolition of drinking clubs or "throwing the book" at small offenders or examples. We feel these measures are wrong. Drinking clubs have been here a long time, and their coming did not bring with it the "gotcha." And these measures create resentment among the students which often results in more trouble. But the perplexity of the deans is understandable. They feel they must do something.

Certainly the students here are not entirely responsible. Increasing vulgarity is a nation-wide phenomenon. Democracy (or whatever one chooses to blame) has made it harder for us, the young, to be the sort of person Sewanee was built for: subject to no outside restraints, but somehow endowed with qualities that made anything he did, right. Perhaps they are right who say this person never existed. But it is better for us now to believe he once did, and try to make him live again.

The New Policy and Common Sense

New laws which seem good on paper must often be modified when their practical results are seen. We believe this to be true of the new social policy.

Of course the policy is a great improvement over the previous hypocritical situation, and as such we are grateful for it. But it does contain bad provisions and inner inconsistencies which should be corrected.

As is often pointed out, the code allows anything to be drunk in the fraternity houses but does not allow liquor to be kept in the dormitory rooms. This raises the question of where the liquor is to be kept when not used.

The provision against liquor in rooms is also susceptible of being unfairly enforced, and that against liquor at the German Club dances will breed widespread disobedience. We feel that no harm would come from allowing liquor in either place.

The provision against public display of intoxicants is good if enforced with reason and equity. We believe the words "public display" carry the notion of unattractive and unnecessary "flashing of bottles. If liquor is to be used in the houses, it must be transported on the campus somehow, and if a reasonable attempt is made to carry it without ostentation this can hardly be called "public display." The object, after all, is not to conceal the liquor so no one will know we have it. We are not that hypocritical. The object is to make a vulgar show of having it, and this cannot be defined by the letter of the law.

For this reason we feel the Discipline Committee erred in giving social probation to a certain young man, otherwise a model student, for his carrying a beer can on a deserted side walk one night. The code reads that persons publicly displaying intoxicants shall be punished by social probation, suspension,

or expulsion. But this means they shall be punished in this way if they are punished at all.

The Committee is free to find a person not guilty, meaning "not deserving punishment," though he has offended according to the letter of the code. Not all persons who have admittedly killed other people are found guilty of murder. Discretion should also be exercised in turning persons in to the D. C. The rules should be enforced predictably, but not mechanically and unreasonably.

Letter to the Editor

Who Goosed The Moose?

To THE EDITOR:

I protest against the misnomer which appeared in the most recent issue of the *Puritz* in the form of a cartoon. I admit that I am not in a position to describe a Dean's nightmare, but the second half of the caption is patently untrue.

Without doubt the counting sheep to fall asleep idea is a euphemism, but the word "gentleman" refers to a person of breeding, education and refinement. It has no connection to the rapists, inordinately selfish individuals who subvert all good things to serve his sensual impulses. Even if man is fallen, his reason tells him that this is a higher calling.

Perhaps the most earthquake truth about the cartoon is the learning moose above the mantle. This simply is not true! Dumb beasts and fire and earthquake and rain and trees and seasons are true to their nature. I see little point in cultivating that which destroys us.

R. J. BROWN, St. Luke's

Letter to the Editor

Noelke Defends Clubs— "Reason for a part of life itself"

To THE EDITOR:

Chancing upon a copy of the *Puritz* this week, I read an editorial to the effect that the deans are out to axe the several drinking clubs on the shallow pretense of requiring justification for continued existence.

Though fully aware of the great responsibility of these men for the well-being of the students on the Mountain, I cannot in any way understand their reasoning for such action. This smacks too much not only of social control but, ultimately, also of intellectual control. Perhaps the fraternities, the ribbon societies, and the normal bull sessions will by the board, too, in a demand for a sufficient reason for continued existence. Perhaps, too, the E. Q. B. club recently moved into its new building will have to look around for a plausible excuse for being.

All these groups are no more than a means to a greater end, social intercourse and life itself. Where goes the freedom for life's involvements and ideas no necessary for actual maturity? What the deans intend of doing is to demand a justifiable reason for a part of life itself. I submit the premise that the only ingredient necessary for any favorable intellectual or social atmosphere is the freedom to be.

This will be an ugly precedent, future deans could abolish almost anything here by demanding justification for existence.

Respectfully,

WALTER NOELKE, '62

The University of Texas



Attention, Social Climbers: Want to know the newest way to become BMOOC? Its easy: just join the newly-formed SPC. The SPC (Social Pea Club) is a new organization on campus, since the demand for such a club has never been as great as it is today, and is made up of many of the top members of the Senior Class. It contains members of Blue Key, future Phi Beta Kappa, graduate school scholarship nominees, fraternity presidents, editors, promoters—in other words, the cream of the crop of the Class of '64. The qualifications for membership are simple and easy to comply with: (1) Do something (anything, it doesn't really matter what) that Sewanee students have always done; or, failing that, (2) do something Mickey Mouse, and be sure to do it quietly. Your qualifications will be brought up before the Discip... membership committee, and your acceptance into this ever-growing club will be railroaded through. Do your part to raise your fraternity's participation average in this exciting new club. Our latest figures show that the KAAs are leading with a 57.85 percent participation average. See the co-chairmen of the membership committee, John Webb and Al Schmutzer, for more details.

Oh, by the way, wasn't it cute how the Cee Bee Food Store people slipped their new sign by us without anyone noticing it? Lovely sign... bright yellow lettering on Grade Double Z redwood. I wonder what the Dean would do to me for burning it?

Remember when, a couple of weeks ago, a couple of boys were well on social pro after being caught drinking at Wofford? Well, on the list of new subscribers to the *Puritz* for this week is the name of Frank Logan, Dean of Students, Wofford College, Spartanburg, S. C. Glad to have you on our list Dean!

There was one thing I did want to blith about this week: if I had wanted to go to a diploma mill, I would have gone to the University of Alabama or the University of Florida instead, and I could have done it a hell of a lot cheaper, too... I think I'll send a copy of the catalog from Mr. Ranson's office and cut out the part about the low student-faculty ratio, and mail it to the V-C... I don't think that he's ever read that particular section... I just wish that I could find something that Abbo had said about the wisdom of knowing the difference between quality and quantity...

And finally, Mr. Read's History 101 class has asked me to thank the Duck River Electric Company for announcing that the power would be turned off from 12:30 to 2:00 Monday morning so that they could arrange their study schedule for their quiz Monday accordingly...

THE FLYING GOWNSMEN, '64



If the Cherokee Indians of two centuries ago could see the Cumberland Plateau today, they might marvel at the progress that the white man has made. But it is more likely that they would miss the abundant game, the great droves of elk, the buffalo herds, the flocks of wild turkeys and of wood pigeons once found on this mountain. If Chaucer's pilgrims could visit New York, they would marvel no doubt at the towering structures in the sky, but they would miss their pleasant medieval countryside; listening for the nightingale or the lark they would hear instead the sousing of horns and motors; they would search for the genial fellowship found at the old Tabard Inn, they would look for the shrines of martyrs and for the piety of their own day. When we say that people would be astonished if they could come back, we are usually flattering ourselves. We ignore the fact that the reventons would look for something "long silently gone out of mind or violently destroyed." They would be more aware of what has been lost than of what has been gained.

As late as the 1930's a large picture of Oliver Cromwell, handsomely framed, hung in Walsh Hall at Sewanee. This was strange, to say the least, because if Cromwell had had his way, there would be no Sewanee, and no Church as we know it. A portrait of Lee in the cabin at Hot Springs, Arkansas, at Stratford, could hardly have been more incongruous. But history is full of paradoxes, and the little ironies that sometimes creep into our symbols are often quite amusing. In Normandy, in the Abbey in Caen where once lay the bones of William the Conqueror, we were permitted to see a picture of his memory—placed there, if you please, by the Mayor and Citizens of Hastings. After this it would not be surprising if some Teutonic people of Atlanta put up a monument to William Tecumseh Sherman... Then there was the story of that American, someone invited to a chateau in Touraine. Sparking with champagne, and eager to show his affection for France, he began to sing, "Allons, Enfants de la patrie..." It was like singing "Marching Through Georgia" in Savannah, or even worse, the "Internationale" in the Union League Club. But he was baffled when his host exclaimed, "Monsieur! Cette petite chanson chez moi!"

The Sewanee Purple

The University Weekly Newspaper—Founded 1892

NORVAL YERGER	Editor
RICKY KART	Assistant to the Editor
BILL MUNSELL	News Editor
HENRY DOZIER	Sports Editor
FRAN BASS	Managing Editor
COLEY MCCINNIS	Associate Editor
DOUG MILNE	Business Manager
BILL MAHONEY	Circulation Manager

Photography: Fred Diegmann, Zan Furtwangler, Wilson Wyatt; Review: Joe Parker; News Assistant: Tom Broadfoot; Proof: David Brooks, Bill Gignall; Be Scheller, Conrad Blair; Make-up: David Porch, Danny Anderson.

Thursday, October 31, 1963

Second Class postage paid at Sewanee, Tennessee. Published every Thursday from September to May inclusive, except during vacations (Christmas, Spring) and examination periods (last two weeks in January and May) by THE SEWANEE PURPLE, the official organ of the students of The University of the South. Telephone 598-5653. Subscriptions, per year, \$3.50 in Sewanee, \$4.00 mail.

Tigers Roll Centre in Victory Fast Finish Brings 35-7 Rout



Roy Tucker dives in end zone to score Sewanee's second touchdown against Centre. Joe Colmore (80) and the middle of the Tiger line led the charge.



Home victorious again, the Sewanee Tigers remain unbeaten, untied, and very impressive. But Centre was no pushover, and the Tiger line knew it had been in a ball game. "They hit us well. And they were really up for this one," commented Coach Shirley Majors. "But I think our boys hit too. It was this hard hitting which forced the Colonels into mistakes that set up three Sewanee scores. "We attribute most of the victory to the defense," continued Majors.

Bred's Help Tigers
"We didn't have the football during the first quarter," Majors said as he started into a discussion of the game. "Poor handling of a punt and an interception had us in the hole. But they had every chance a team could have to score, and they didn't." The defensive line was good, and once the Tigers got out of the hole, they went to work.

Agnew pilfered one pass and ran it back to the one. A few minutes later came the fight to Centre, the Tigers' second drive of the afternoon. At the half they led 14-0, but the Colonels were definitely still in the game.

Defense Dominates
Coach Majors said he made few adjustments at halftime. He simply told the boys that the defense was doing its share, and if the offense would careen the fight to Centre, the Tigers could win going away. Well, the defense continued to do more than his share in the second half. Two interceptions and a fumble set up two of the touchdowns. The third came on a spectacular 53-yard pass play as the game ended.

"We had a couple of breakdowns on the first two Majors, referring to the Centre touchdown. Once we let a man get in the clear on a short pattern, and he romped 35 yards, and should have scored except for an excellent block by Larry (Majors). Then on the first play after they had picked up a first down at the fourth," "We were in the wrong defense, and there was too much confusion." The Colonels had a fine passer in Elmer Jackson, and only constant pressure by the Tiger line kept him from having a field day. As it was he hit on 10 of 13.

No Stars
Majors emphasized one point in his talk. "We haven't got any stars on this club," he said. "Some are able to shine more than others because of their position, but as any of our backs will tell you, if it hadn't been for our line, none of our stuff would move." Majors again singled out his linemen, Paul Tesman and Dan Davis, for a fine job. "Davis plays consistently good defense," he noted. "And our two starting ends have been doing a fine job. They haven't had the opportunity to be spectacular, but they have been turning in fine games." He was referring to Bob Davis and Frank Stuckel. According to the statistics, the Cen-

tre passer was thrown for seven losses totaling 56 yards. "Don Upon rushed the passer well," Majors began again. "And our hard hitting was responsible for their mistakes." "I thought it was Jim Colfer's best game too." The Centre passer, by the way, had gone to the University of Kentucky on an athletic scholarship, but he left two years ago when Charlie Bradshaw took over the reins.

Depth Important
Majors emphasized the fact that he had 25 boys who were really playing some football. He is trying to give everybody as much rest as possible because, according to the old saying, "The worst is yet to come. Jimmy Stewart has been putting in a lot of time, more than I would like for him to, but I just can't find a substitute for him," commented Majors. But on the other end of the stick, Majors marvelled at his apparent surplus of tailbacks. "Harrell Harrison did another good job, both at running and calling the plays." And then there is a prime example of what a little extra effort can do. Ray Tucker, who has done a fine job at fullback all year, took three men out with one block on a play to give Harrison time to get off a pass. "Our pass protection has been excellent," Majors continued.

Southwestern Tough
All in all, the Tigers' outstanding success thus far this year can be attributed to the fact that it has been a team effort. Nothing makes this more apparent than the fact that the team's third leading scorer, and number six in the conference, is the kicker, Phil Condra, who has booted 24 extra points. But the team must keep its head up and plod along. Although they don't have an easy game remaining, this 42-0 but week in St. Louis. "Southwestern's record is unimpressive. They are 2-3-1, having played two common opponents with Sewanee. They beat Millsaps 47-7 and lost to Centre 13-8. To do damage to scores points against what Coach Majors referred to as the "army." Washington University. Washington whipped them 42-0 but week in St. Louis.

"It will be homecoming for the Lynx, the third straight homecoming contest for the Tigers." "Everybody has something special for us," joked Majors last week. "At Austin it was Dnd's day, and against everybody else it's homecoming." This is an old rivalry, and Southwestern is always tough in Memphis. Last year the Tigers whipped them 44-0 here, but it shouldn't be so easy this time. They have their best team in three years.

Super Coming
Here is a pleasant comment. For a change, about student support. Coach Majors wanted to express his, and the team's appreciation for the fine turnout in Danville. There were quite a few Sewanee folks there. "I hope it continues this week in Memphis," Majors said. It probably will, as there are quite a few persons planning to make the trip.

The Sewanee Tigers rolled to a 35-7 victory over Centre last Saturday, but the game was a lot closer than the score showed. It was again the defense which paced the victory, as three pass interceptions and two fumbles helped set up three Sewanee touchdowns. Again, as has been the case in almost every one of the Tiger games, five different men scored the touchdowns. But the defenses, which held Centre to 162 yards total offense, 131 in the air, and ten first downs, made the difference.

Centre Dominated Early
The Colonels line was hitting hard, and it was difficult for the Tigers to penetrate. They managed only 208 yards rushing, about 140 below their per game average. And M. L. Agnew, throwing in tough luck, was able to complete only one pass all day, that a 53 yarder for the game's final touchdown.

Centre dominated most of the first quarter as a fumbled punt and a pass interception bottled the Tigers up. But the defense held when it counted, and finally the Tiger got a break. Agnew intercepted a Jackson pass on the Col- orel 42 and returned it to the one yard line before he was hauled down. After he and Ray Tucker each had a crack at the line, Agnew went over on third down for the score. Phil Condra booted the extra point and it was 7-0 early in the second quarter.

Only Sustained Drive
Five minutes later Sewanee began a sustained drive on its own 44 yard line. Larry Majors directed the team, and in nine plays they moved the 30 yards to score. Ray Tucker dove in from the one yard line for the score. Condra's toe was accurate again, and the Tigers led 14-0.

For the remainder of the half the Colonels, though threatening, could not get going. The passing attack was good, and their quarterback, Elmer Jackson, was superb. He was being rushed hard by the Tiger line, but he managed to get off a high percentage. The Colonels' big line was doing a good job, and the Tiger offense was not having an easy time of it by any means.

Phis Retain Lead In IM Football

The league-leading Phi Deltas continued in their winning way with victories over Sigma Nu and Kappa Sigma. The Phis are now 8-0-0. They are followed closely by ATO, now a full game off the pace at 7-0-2. The ATOs defeated Theologs, Lambda Chi, and SAE, but tied PGD 13-13. The Delta idle for most of the week, dropped deeper into third place with a mid upset loss to the Betas.

With an additional win over Kappa Sig, the Betas boosted themselves into second place in current standings. The SAEs slipped a notch to fifth with a loss to ATO but still dropped the independents more hopefully in the cellar. In other action, the Phi Gans defeated Independents and KA, the Theologs won over the KAs and Snakes, and the KAs dropped Lambda Chi.

The story of intramural football for 1963 will probably be over when the Phi Deltas tackle the ATOs and Deltas, respectively. Also on Friday will be another important game for the ATOs with Beta.

PDT	8	0	0	1,640
ATO	7	0	2	889
DTD	5	1	2	753
BTP	5	3	0	620
SAE	5	3	1	612
ICD	4	3	2	620
KA	4	4	0	560
SN	3	5	0	378
SG	2	5	1	275
LCA	1	5	2	253
RS	1	7	0	125
Independents	0	8	0	600



Harrell Harrison lies just short of the Centre goal line in the fourth quarter, scoring the Tigers' fourth touchdown on the next play. Identifiable blockers include Kirk Dornrever (86), Jim Colfer (76), and Frank Stucklefield (81).

means. But the defense had held when it counted, and with a few minor adjustments, the Tigers went out to carry the fight to Centre in the second half.

Breaks Supply Two
Early in the third period, after the Tiger had been stopped deep in Col- orel territory, Joe Colmore pounced on a fumble at the Centre 24 and the Tigers were in business again. Three plays later Dan Davis went up the middle for 15 yards and the touchdown. Condra booted the point, and it was Sewanee 21, Centre 0.

After an exchange of punts, Davis again supplied the knockout punch with an interception. Picking off the pass at the Colomet 47, he brought it back to the 10 before he was hauled down. Harrell Harrison took the team over in three plays, the payoff coming on a five-yard jaunt off tackle. Condra was reliable, as usual, and early in the fourth quarter the Tigers had forged ahead 28-0.

Foat and Furious End
It was very late in the game before any more action took place. The Colonels took over near the midfield strip with about three minutes remaining and began to move. One pass play, and a kick in which caught the defense napping, covered 35 yards to the 14 yard line, and Larry Majors came all the way across the field to stop Kell at that spot when it looked as if he had a sure touchdown. Four downs later, they barely made a first down at the four-yard line. Catching the defense off guard again, Jackson hit Kell with a pass up the middle for the touch- down with only 25 seconds remaining in the game. Billingsly booted the point, and the Colonels became the second team to score on Sewanee this season.

But like lightning, the Tigers struck back. After an on-side kick recovered by Sewanee at the 47, Agnew fadded to pass, and found Joe Colmore in the clear for a 53-yard touchdown pass. Colmore scored as time ran out. Condra made it five-or-five, and the Tigers had chalked up their fifth win in a row, 35-7.

Defense Responsible
Again, the defense was primarily responsible for the win. Three times the Tigers started from inside the Centre 25 after fumbles or interceptions. And despite the fact that Jackson was able to run on 10 of 19 passes, he was rushed hard and spilled for numerous losses. Most of his completions were short tosses, as only once did he hit for more than 10 yards.

The Centre line, again outstripping the Tiger forward, gave ground grudgingly. Sewanee had only one sustained drive, a 66-yard march for their second score. The game was by no means a runaway. But good, tough football and a hard-hitting line forced the Colonels into mistakes, and the Tigers took advantage of their breaks. The Tigers, with a 5-0-0 record (the only unbeaten, untied team left among Tennessee colleges), travel to Memphis to meet Southwestern this Saturday. It is homecoming for the Lynx, who sport a 2-3-1 record for this season's play. They are 0-2 in the CAC. Sewanee will be looking for its second CAC win and the conference lead.

Purple's Girl of the Week



Sunny Florida is the home of snow-white beaches, palm trees, orange groves, and girls like Debra Waring, this week's Purple Girl. A freshman at Palm Beach Junior College, Donna is interested in modern dancing and dental hygiene (?). She makes her home in Jacksonville, in the same neighborhood, coincidentally, as Kyle Duncan.

Pic of Flicks

By RICHARD DOBBIN



Sophomore Jim Baird studies on second floor of new Lambda Chi house. Door at rear leads to one of two balconies. Paneling is light-stained native hickory.

Thursday and Friday: Bye Bye Birdie. This musical flick has about as many faults as it does qualities. It's from the Broadway musical which had a successful run. The story is on two levels. The major story line is about a rock 'n' roll singer who is being drafted into the army. A plan is conceived so that the singer's last appearance before going into the service will be on the Ed Sullivan Show. He will sing a new song and kiss a girl selected at random from a small town. But the girl's boy friend doesn't go along with this. The other plot concerns itself with an old triangle: the song writer, his secretary who wants to marry him and his mother who doesn't want her to marry him. But, as in most musicals, the story is not interesting. What the "thing" is the songs and some of the performers.

Dick Van Dyke portrays the song writer who is trying to get his new song. His comic talents are completely wild in this slapstick role. Jane Fonda, in a brazen wig, is good looking and shows a small talent for musical comedy. Anne-Margaret is all star in Sweet Apple, Ohio, who is to be great. The singing is not great to watch, but anyone who can believe her as an innocent seventeen year old girl must have a very good imagination. Bobby Rydell, her boy friend, is embarrassing. The song is great. The story, however, Paul Lynde, Anne-Margaret's father, is funny in parts but

he doesn't have a chance to exhibit his comic talent. It is Jesse Pearson, playing Conrad Birdie, the singer, who makes the flick worth going to see. His take-off of Elvis and his follow-up is excellent. He has gotten down the swagger, the hard-breasting style of singing and, of course, the twitch which makes rock 'n' roll sell. Even the evidence of his baby fat adds to the impression.

Birdie is overproduced. Some of the numbers don't come off as little more than a puff of smoke. But the "Overtures," with Ann-Margaret, "Honesty Sincere" and "One Last Kiss," sung by Pearson and particularly "The Telephone Hour" and "A Lot of Livin' to Do" are tremendous. The choreographer, Omaha White, deserves a nod of recognition for the success of the last two numbers.

It's fun to watch even with its faults.

Owl Flick—Adventures of a Young Man. For the first time this year we have an Owl which doesn't deserve to be one because it's too good. It has an all-star cast which doesn't add much to the flick except for Paul Newman as the hero. The picture is interesting as a worth the price of admission. The make-up man has done a good job of disguising him but Newman completely changes his usual style and this is a credit to the make-up man. Paul Newman is an excellent actor and all you have to do is to see him in this

to prove it. Richard Beymer, the "young man," does a good job in his role. This adventure is from different works of Hemingway about his own youth. He calls himself Nick Adams. The movie shows different episodes in his life. The photography is well done as is the color. The pace is rather slow which suits the episodic story. It is a good motion picture and worth watching but quite dull.

Saturday and Monday—Donovan's Reef. John Wayne has found his place in movies. He plays the same character in everything from The Alamo to the longest Day. The hardest fighting, hard-drinking and hard-loving man is what is associated with John Wayne and as long as he keeps making money doing this part he's not about to change. This flick is no exception. Wayne and his buddy, Lee Marvin, are sailors who do little more than fight and drink until a woman comes to town. The good job is done in the water and you know right away he's in love. It is supposed to be fun but, most of the time, it is not.

Sunday and Tuesday—The Gleaner Report. This is based on Irving Wallace's best seller of the same name which was taken from an idea in the Kinsey Report of the sexual habits of "young men." The picture is not what was a trashy book and it's a pretty bad flick. The book was written just to sell and the movie tries to capitalize on this.

Step right up and observe the sex life of four normal women. Jane Fonda is a frigid woman. Etem Zimbalist, Jr., the interviewer, tries to cure her. You can take it from there. Claire Bloom, the girl who dabbles in poetry. She starts dabbling in young studs she finds on the beach. Take it from there. Shelley Winters plays an aging woman who finally decides to be unfaithful. Take it from there. Glynis Johns is a nymphomaniac. Take it from there.

Now all this sounds very interesting but, as practice it turns out very boring. It possibly could have been a fair flick (though I seriously doubt it), but even with the actors trying their best, everything else is bad from director to producer. The producers didn't have anything to start with and they haven't added one thing to the movie.

Water Shortage Rumor Denied

(Continued from page one)
water now that it did in years past when Lake O'Donnell was completely full.

The few complaints about the taste of the water have arisen not from Hamilton, but from an abundance. Mr. Hamilton explained that the raised level of the reservoir has added a new element of manganese to the lake edgewater. The choice between yellow water or an overdose of chlorine to rectify the situation, chlorine will be used until the manganese is leached out of the soil.

To quiet any further fears along this line, Mr. Oates, business manager for the University, said that Sewanee maintains a first-class fire department. He commended the volunteers for their fine work last week, but cautioned students to be careful with cigarettes and matches around the dormitory. He urged the likelihood of further calls on the student fire fighters.

OLDHAM THEATRE

WINCHESTER, TENNESSEE
THURS, FRI, OCT. 31—NOV. 1
THE CONDEMNED OF ALTONA
SATURDAY, NOVEMBER 2
Double Feature
EXPERIMENT IN TERROR
and
THE MAN FROM THE DINER'S CLUB
SUN, MON, TUES, NOV. 3, 4, 5
ALL THE WAY HOME
WEDNESDAY, NOVEMBER 6
CRITICS CHOICE

New College Plans Revealed; Expansions, Alterations, a Must

By KEN MARTIN
Growth is the only evidence of life—John Henry Cardinal Newman
—Sewanee has its growing pains: crowded classrooms, fifty-six instructors for 150 students, fifteen and eighteen-seating tables. But when it reaches maturity the University may finally approach those Visions of greatness its forefathers had in mind for it.

The primary goal was that it be truly British. Like Oxford, the University would be composed of small, intimate, historic colleges. Yet the founders were a trifle overly-optimistic: the hospital stands where it is today because it was to have been the center of the campus, around which the University's proposed colleges would be clustered.

The New College
The new college will be a completely separate unit of the University, with separate faculty, classrooms, dormitories, dining hall, chapel, student government, fraternities and deans. Its status will be that of the present college, yet it will share certain "University" facilities with it. The degree will still read "The University of the South," and will continue to be a Bachelor of Arts—unless you study trees or God. Future freshmen will apply to the University and be accepted on its standards by an Admissions Department. Like class scheduling or dormitory registration, students will be enrolled in the college of their preference, until there's no room left. With a doubled faculty, all subjects now offered will be taught at Upsaturn, with a few notable additions. "In the reasonably near future, we will apply the same departments will be started in Russian ("It has a greater literature than those of several other modern languages, and there's quite a demand for it"), geology ("We're in a peculiarly advantageous position for teaching it; we've got some strata exposed right out over our main"), and psychology. ("It's never been taught here in an extensive way, and we all agree it would be good to have it available").

Similarly, two new deans will oversee the college, but until they become available, the present ones may not get any sleep at all. A separate O.G. will "govern" it, with its members chosen on an equal basis with the present one. Because honors—no less than in an individual is best judged by

those who know him, likely be another Honor Council. Either the other organ would have its own Pan-Hell, which brings us to still another growing pain.

Fraternities
Students in the present college will have to decide how the fraternities will meet the problems of expansion, but the vice-chancellor makes it clear that he feels that "chapters bigger than about fifty or sixty boys are not really good things." A fraternity ought to have intimacy." They are at least three other alternatives: (1) Establish new national fraternities; (2) establish new chapters of national fraternities now represented on this campus; or a mixture of new and old groups, and (3) establish new fraternities similar to the system at Princeton. Nothing was said about how the ribbon and drinking societies will be adapted to the two-college system that in itself may be ominous.

Stone
Stone will remain Sewanee's chief building material. "It's a basic principle of architecture," says McCrady, "to build with one of the materials natural to your area, if it's practical to do so." It's practical, all right: Tennessee Ribbon Stone is strong, durable and, with the University's new cutting methods, costs no more to produce. How it'll be assembled is another matter, still unresolved. "Certainly you don't have to continue the tradition of Gothic architecture, although in many respects Gothic is the best way to use stone; it's the most flexible form I know." The administration may try to get competitive designs in more than one style, but one principle is absolute: whether its buildings take their inspiration from this century or some other, the new college, like the present Oldham, will be homogeneous within itself. Edward Douthett Stone won't be opposite Christopher Wren. But now the Transition is what concerns us, and certainly, to those who worry about it, just one question and forethought would be useful, for "... Yesterday is but a Dream, and To-morrow is only a Vision; and To-day, well-lived makes every yesterday a Dream of Happiness, and Every To-morrow a Vision of Hope. . . ."

The Salvation of the Dawn, from the Sanskrit

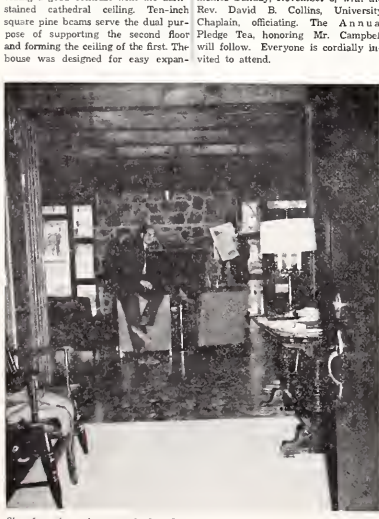
LCA House Completed; Dedication Set for Sunday

Homescoming Weekend saw the completion of the new Lambda Chi Alpha Lodge. Groundbreaking ceremonies were held last May, and after a summer of construction the house was sufficiently complete by September to hold rush parties. The house was designed by Mr. William B. Campbell of the history department and built by Gamble Construction Company of Huntland, Tenn.

Located on the south end of the fraternity oval, the lodge is surrounded by several acres of wooded land. It is built on a concrete slab and the basic structure is entirely stone and wood. Entering through the double front doors one finds himself in an entrance hall which opens into a large living room. Bathrooms are located to the left of the entrance hall and the kitchen-bar complex is on the right. A massive fireplace occupies the far end of the living room, beyond which is a concrete patio with a barbecue pit on the back side of the fireplace. An open stairway on the left leads to the second floor. This level features glass walls at both ends and can be divided into two separate rooms by means of a folding vinyl partition in the center. Spacious balconies are located at both front and back, with the former affording a view of Shepard Tower. The second floor, like the rest of the house, is paneled in native hickory, providing a good contrast with the dark-stained cathedral ceiling. Ten-inch square pine beams serve the dual purpose of supporting the second floor and forming the ceiling of the first. The house was designed for easy expansion

and a six-foot eavesment window on the right wall of the first floor will eventually connect with a new addition. The new lodge is the third in Lambda Chi's three-year history on the Mountain. After colonization in the spring of 1961, the fraternity moved into an old house formerly occupied by Phi Delta Theta and Beta Theta Pi. A move was necessitated last spring when the University announced plans to erect the DuPont Memorial Library on the same site and LCAs found themselves in the old Forestry Building shortly before Spring Vacation. With their installation as a fully-fledged chapter coming up in a matter of days, the brothers set to work at renovating the rather hapless structure. The basement was cleaned out and converted into a bar and the sea-side-green walls were painted a light brown. The fluorescent lighting and the incredibly dirty tile floors remained sources of discomfort, but the fraternity was resigned to staying there for an indefinite period. But largely due to the efforts of chapter president Mike Thomason funds for a new house were secured and Mr. Campbell, with suggestions from the brothers, drew up the plans. The results are now materialized and Lambda Chi now has a permanent home at Sewanee.

The lodge will be dedicated at ceremonies Sunday, November 3, with the Rev. David B. Collins, University Chaplain, officiating. The Annual Pledge Tea, honoring Mr. Campbell will follow. Everyone is cordially invited to attend.



Shot from front door reveals first floor interior. Stone fireplace and rough-hewn exposed pine beams add to lodge-type atmosphere of house.